



Contents

Welcome	2
Ofsted & CQC Inspection	3
SEND Inclusion Audit	4
Bristol Autism Team	4
Redevelopment of the Findability Website	4
SENCo Information	4
Top Up May 2018	4
Conversions from Statements of SEN to EHCPs	5
Statutory EHCP Annual Reviews	5
Families in Focus Team	6
News from the Hope	6
CPD and Other Opportunities	7
Schools GDPR Package	8

Building Resilience for Learning

Supporting resilience is key to long term success

Monday 11th June 2018
@ City Hall

Narrative Practice - Supporting SEMH

Learn how to apply Narrative Therapy approaches

Thursday 28th June
@ City Hall



Welcome

Dear colleagues,

A warm welcome to the spring edition of the SENCO newsletter. Let's hope that we will have some warmer weather this term. Christmas now seems like a distant memory, and May Top Up is just around the corner.

It was great to see so many of you at the recent briefing and SENCo conference. The young people who spoke at the conference were inspirational and added a new dimension for us; hearing the voice of students at the conference. We were also delighted to have a presentation from a SENCo and a parent (a big thank-you to Martine) and hope that we can include more presentations and examples of this type of work in the future.

The presentation from the Education Endowment Foundation (EEF) has also occupied my thoughts over the past few months. In particular, we need to encourage a greater focus on evidence informed practice and more specifically, feedback, peer tutoring, and metacognition to ensure our children and students improve their outcomes and attainments.

If you are not familiar with the Education Endowment Foundation, please [follow this link](#).

We are looking forward to seeing you at the Top Up panels in May. Following our office move, we have had to change the venue to The Park for the three days. Whilst every endeavour is being made to ensure that the days run smoothly, new venues do bring new challenges.

Let's stay connected. Please do send any articles to share with colleagues in particular, we are keen to publish any information about or from SENCO cluster meetings. We are keen to ensure that any SENCOs new to post or Bristol can connect with skilled colleagues in the local area.

Guidance for articles for the SENCO newsletter:

- Articles should be no longer than $\frac{3}{4}$ of a side of A4;
- Articles should include hyperlinks to websites and other documents where necessary;
- Articles should include references and hyperlinks to legislation where appropriate;
- Important dates can be included but please ensure that they are not after the publication date;
- Short updates are also welcome;
- As are any changes in your contact details or team/ school composition (hellos and good byes);

Once we have received the document they will be added to the newsletter design, so make sure it is finalised before you send it.

Please remember that you are responsible for the content and for proof reading your article, so ensure that you are happy with it prior to sending. The articles you wish to be included need to be sent to TwOnlineadmin@bristol.gov.uk.

Thank you for your continued endeavours in leading Bristol towards being a centre of excellence for CYP with SEND.

With warm wishes

Dr Vikki Jervis & Dr Simon Claridge

Principal Educational Psychologists

vikki.jervis@bristol.gov.uk

simon.claridge@bristol.gov.uk

// Thank you for your continued endeavours in leading Bristol towards being a centre of excellence //



Ofsted and CQC Inspection

Background

Following the SEND reforms in 2014, a SEND inspection framework was introduced in 2016 to test how well Local Areas have implemented the reforms, and the difference they are making for children and young people with SEND and their families. All Local Authority areas will be inspected over a five year period, so Bristol's Area Inspection of SEND could happen at any time.

This is a joint inspection by the Care Quality Commission (CQC) and Ofsted, covering the education, health and care of all children with SEN and/ or disabilities from birth to age 25 years (including those receiving SEND support, not just the children with EHC Plans).

The inspections focus on three key questions:

- How effectively do partners in the Local Area identify children and young people who have SEND?
- How effectively do partners in the Local Area assess and meet the needs of children and young people who have SEND?
- How effectively do partners in the Local Area improve outcomes for children and young people who have SEND?

Before the Inspection

Before the inspection, the Ofsted and CQC inspection team will have considered a range of published information, for example Bristol's Local Offer, ([Findability](#)); the Joint Strategic Needs Analysis (JSNA); schools' websites; and SEND related data.

Bristol City Council will receive five days' notice of the inspection – the call will be made to the Director of Children's Services (DCS) on a Monday morning, followed by a call to the Chief Executive of BNSSG Clinical Commissioning Group (CCG).

During the next few days the lead inspector will have conversations with the Local Area leads to confirm what additional information the team require, which educational settings they will want to visit, and who they want to meet while in Bristol.

They will also host a webinar for Bristol parents and carers of children with SEND.



During the Inspection

We are preparing an outline timetable that covers all the focus groups that we believe inspectors will want to meet. It is likely that we will want SENCO representation on a number of these focus groups, so if you are interested in taking part please contact me via the email address given at the end of this article.

Inspectors may decide to visit a setting or to meet certain people to follow up any key lines of enquiry that emerge throughout the inspection, for instance tracking the 'journey' of a particular child from their case records. The lead officers will respond to any such requests and co-ordinate communications and activity as required.

After the Inspection

Ofsted and CQC will publish an inspection report in the form of a letter that summarises key findings including strengths and areas requiring further development. In addition, reports may also include areas of significant concern that require the Local Area to submit a written statement of action. To date 49 inspection letters have been published and of these, 20 Local Areas have been required to produce a written statement. A summary of findings can be read in '[Local Area Inspections One Year On](#)', published in October 2017.

For detailed information about the inspection see the [SEND Inspection Framework](#) and the [SEND Inspectors' Handbook](#).

Virginia Roberts

SEND Inspection Preparation Lead

virginia.roberts@bristol.gov.uk

Updates from Special Education, Autism and Travel Team

Bristol Autism Team

Bristol Autism Team's Education Hub Primary Team are working at full capacity and are therefore unable to accept any new referrals in Terms 5 and 6 unless they are for children in Year 6. Year 6 pupils will be allocated to the Secondary team in order to ensure successful transition planning to Year 7 over the next two terms.

In the meantime, please continue to make use of the Autism Toolkits on Findability and all the resources, information and guidance detailed in the attached Ways of Working. The team will also continue to offer Solution Circle meetings which take place after school hours, where any member of staff can come along for advice, and education settings will shortly be receiving information about meeting dates for Term 5.

See [Findability](#) for more information



Top Up May 2018

Mainstream school age Top Up will be taking place this term at **The Park, Daventry Rd, Knowle, BS4 1DQ** on the following dates:

South: Tuesday 22 May 18 | **East & Central:** Wednesday 23 May 18 | **North:** Friday 25 May 18

Last month we sent out a message on behalf of the Inclusion Reference Group (Top Up working group), in this message the group discussed and decided that it would be helpful to link the Inclusion Audit and Top Up processes in the attempt to streamline and join processes. It was considered that the I Audit information would assist in the understanding of school provision. Whilst the information from the I Audit within the Top Up submission papers will be helpful, at this point it is not a prerequisite and whole school provision maps could continue to be used."

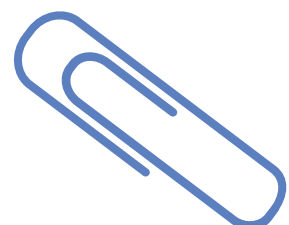
See [Findability](#) for more information

SEND Inclusion Audit

The SEND Inclusion Audit is designed to provide education settings with a tool to self-evaluate their SEND provision in line with the SEND Code of Practice 2015.

Schools Forum, through the Inclusion Reference Group requested that an audit was designed for schools that supported them in better understanding and developing their SEND provision. In 2016 the first SEND Inclusion Audit was launched and we will ask for the audit to be returned annually.

This year (2017/18) we are asking schools to return their SEND Inclusion Audit by the end of term 3. If you have already completed the audit you don't need to start from scratch - you just need to review and update your audit and return it to **Nakita Singh (SEND)** - nakita.singh@bristol.gov.uk



Conversions from Statements of SEN to EHCPs

The Local Authority completed all but one of the final 1035 conversions over the past 12 months and well within the mandatory deadline of 31/03/18. (This was due to a late request for a full reassessment of needs as part of this process)

Thank you very much to everybody that contributed to this process – it has been a huge amount of work and couldn't have been completed without your support and active involvement.

The DfE published new data on Thursday 29 March 2018 titled

“Special Educational Needs: Transfer of Statements of SEN to Education, Health and Care plans” (this was pre-announced on the [DfE stats page](#)).

This data shows the headline national figure for the number of transfers of SEN Statements yet to be completed, as per the 1 March monthly data return that local authorities had submitted. They will not be publishing data at local authority level.

We now have 2182 EHCPs in Bristol.

// We now
have 2182
EHCPs in
Bristol //

Statutory EHCP Annual Reviews

Having completed all conversions, the Local Authority's focus is now on continuing to drive very necessary improvements at pace into all Education Health and Care Plans

in collaboration with children and young people, families and Local Area partners through ensuring adherence to statutory duties associated with EHCP Annual Reviews. Additional guidance and information has already been distributed through Head Teachers' and SENCO briefings and will also go onto Findability next week. Workforce development with Local Authority and CCG staff has also been completed, as have updated quality assurance and screening protocols to ensure compliance in terms of EHCP content and improvements in relation to mandatory timescales from all parties. It is vital that the views, aspirations and contributions remain central to this process.

Populated notification letters for EHCP Annual Reviews that must be held in Terms 5 and 6 of this academic year went out to the Local Area (Education, Health and Social Care teams) and to each early years, school age and post 16 education settings this week.

If you have not received your notification letter then please contact your link SEND Casework Team Area Inclusion Manager in the first instance:

North: Sue Davies or Suzanne O'Kelly

South: Sue Loader

E&C: Louise Arbery

Emilie Williams-Jones

Head of Special Education, Autism & Travel

emilie.williams-jones@bristol.gov.uk



Redevelopment of Findability

The Children and Families Act 2014 brought in the requirement for a Local Offer website that provided information for children and young people with special educational needs and/or a disability. In Bristol we currently fulfil this requirement through [Findability](#). We've been busy gathering feedback on the website and we're now looking to redesign it.

Nakita Singh

SEND Operational Development and Planning Manager

nakita.singh@bristol.gov.uk

Families in Focus Team

April marks a change in name for Early help Teams across the City - From now they are known as Families in Focus Teams.

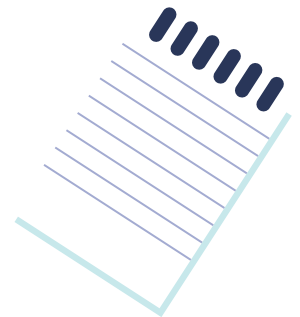
Why the change There are several reasons. As part of our new localities working under the strengthening families programme we are keen to make sure Early Help is a function delivered across the system by our partners as well as us and is seen as an approach rather than a team. It is also fair to say a lot of the work we do isn't that 'Early' and the targeted intervention work is equally as important. Families in Focus was the name chosen by staff and supervisors as reflecting the good work that we currently deliver.

Localities working will see various changes over the next few months. If anything does change we will consult, communicate and inform all of those that might be affected. The name change in its own right is symbolic and does not result in any pathway, referral route changes so business as normal.

Gary Davies

Head Of Early Intervention & Targeted Services

gary.davies@bristol.gov.uk



News from the HOPE

New statutory guidance for looked after children and previously looked after children

The Department for Education published two new statutory guidance documents on promoting the education of looked after children and previously looked after children on 26 February 2018. The extension of the roles of Virtual School Heads and Designated Teachers in England represents an important step forward in recognising the impact of adverse early life experiences for many adopted and permanently placed children, and the need for schools to receive appropriate guidance, training and support to meet their needs.

The new statutory guidance, that becomes statutory for schools from September 2018, details how Virtual School Heads and Designated Teacher roles will be extended to include adopted children, and those placed under a Special Guardianship Order or Care Arrangements Order.

The role of the Virtual School Head teacher for previously looked-after children is to promote their educational achievement through the provision of information and advice to their parents, educators and others who the Virtual School Head considers necessary.

Designated Teachers will be the central contact point in schools for parents, carers and guardians and work closely with them to ensure the best outcomes for previously looked-after children as well as Children in Care.

Designated Teachers also have a role to play in ensuring that Pupil Premium Plus funds are applied for and used appropriately.

If you require any further advice or support once you have looked through the new guidance please contact rebecca.harrison@bristol.gov.uk or visit our website for more details and further information.

Rebecca Harrison

KS3 Transition & SEND Lead

rebecca.harrison@bristol.gov.uk

CPD and Other Opportunities

Are you a teacher with an interest in mental health? A chance to try out mental health education programmes – & £1000 for your school – Sign up today!

The Anna Freud National Centre for Children and Families is looking for primary and secondary schools to take part in our 2018 - 2020 Education for Wellbeing research programme to implement and evaluate a range of mental health interventions for school pupils in years 4, 5, 7, 8 and 9.

Commissioned by the Department for Education, this exciting new programme aims to evaluate pioneering ways of supporting the mental health and wellbeing of school pupils. We are looking for schools who want to improve the mental health and wellbeing of their pupils to work with us, one of the UK's leading evidence-based children's mental health charities.

Some of the benefits for taking part include:

- Providing your pupils with whole-class mental health and wellbeing programmes with support from leading experts in child mental health.
- Free mental health and wellbeing training from mental health professionals for selected school staff.
- £1,000 remuneration in recognition of administrative commitments.

To apply and to find out more, including whether your school is eligible and what would be required for participation, please click here. Any enquiries can be sent to educationforwellbeing@annafreud.org

Expressions of Interest must be submitted before 30th April 2018.

Are any Secondary SENCOs interested in joining a Secondary focused SENCO cluster group?

Are there currently Secondary focused SENCO cluster groups already in place in the city?

If interested in forming a Secondary SENCO cluster group or if you are already part of one, please email me at jba@fairfield.bristol.sch.uk

James Barnes SENCO, Fairfield High School




Mental Health First Aid Training for Primary Schools

Trading with Schools in partnership with Public Health is pleased to offer Mental Health First Aid training for primary schools. This training is limited to 2 people per school and the 2 day training (both days must be attended) is £100 per person but if 2 people from the same school book at the same time, the 2nd person is free. Please see attached for further details and dates.

Please book at www.tradingwithschools.org, phone 0117 9222444 or e-mail tradingwithschools@bristol.gov.uk

Talk Boost

Delayed language can significantly impact on children's attainment. Many of these children have the potential to catch up but only if they receive timely intervention. Talk Boost KS1 is a structured and robustly evidenced programme for 4-7 yr olds that can boost a child's communication by an average of nine to 18 months after 10 weeks of intervention. Some schools tell us this could help more than half their learners. See attached leaflet for further information.

-  tradingwithschools.org
-  tradingwithschools@bristol.gov.uk
-  0117 922 2444

SENCo Conference March 2018

This year's SENCO conference at BAWA was on the theme 'Partnership and Participation' and from the buzz in the room and the feedback there was certainly a lot of participation.

Councillor Helen Godwin kicked off by introducing a group of young people with SEND from the Listening Partnership. A goal of the Listening Partnership is 'to make sure that the voice of SEND young people is heard and acted upon by the people who make decisions that affect our lives'.

Thanks so much to the young people for their presentation – it was incredibly powerful

You can get more information about their campaigns and what matters to them by watching the video clips done specially for the conference. These are a powerful way to hear young people's views and share them with school staff.

It was great to have children and parents at the heart of it

[Autism and Anxiety](#) | [Positive Behaviour](#) | [Employment Participation and Person Centred Planning](#) | [The Listening Partnership](#)

The conference kept the emphasis on partnership and participation by hearing from parent, Lee Dodds and SENCO Martine Stack who worked closely together to develop very individualised provision for a group of

pupils transitioning to adulthood with significant SEN.

There were 3 national key note speakers. From Keith Thompson, DfE, we got the most up to date information about tribunals (this helped make sense of recent changes for Education and Health Care Assessments) and main themes for the DfE. In return he got a strong message about schools concerns about support for vulnerable children to take back to the DfE.

A very informative and enjoyable conference. Some good ideas to trial in school

Nasen speaker gave lots of useful and practical advice

Alison Wilcox from NASEN gave comprehensive and practical information, much of it from a parent perspective, on how SENCOs can work effectively with parents. She emphasised that many school staff feel they lack training and confidence in SEN knowledge and systems and shared research illustrating this from a recent ATL survey.

Tom Martell from the Education Endowment Foundation (EFF) emphasised how important it is we choose our interventions carefully. EFF research finds that only 25% of interventions actually support progress. The most effective support is often low cost, for example high quality pupil feedback.

Tom Martell was excellent, I will use what he said in my day to day work All content useful and relevant

I really enjoyed the workshops and appreciated their positive approach... I would welcome more workshops like these in future

The day also included a range of workshops that gave people lots of food for thought. SENCOs went home suitably exhausted – as one evaluation commented, 'perhaps too much for one day?!' There was an emphasis on providing value for money and making sure people know about all the free resources available. The Educational Psychology team all provided information and links to their favourite free resources and both [NASEN](#) and [EFF](#) have fantastic websites that are highly relevant.

Jenny Maxwell
Senior Educational Psychologist
Jenny.maxwell@bristol.gov.uk

Targeted Short Breaks Engagement & Consultation

[View the consultation here](#)

We are very happy to be launching a two-part public engagement and consultation for Bristol's targeted short breaks. The first part will run until the 1st June, then we will evaluate the responses and run a further six week consultation until 15th July.

Bristol's Short Breaks services include both Specialist Short Breaks, and Targeted Short Breaks. Specialist Short Breaks are higher-level and residential services that are accessed following a social worker assessment, this currently includes direct payments. Targeted short breaks are open access and do not require a social worker assessment for families to access.

This Engagement and Consultation process is concerned with:

- **Targeted** Short Breaks, including transport
- Options for a Personal Assistant sourcing support service
- Widening eligibility for short breaks to include children who have ADHD with complex needs



Specialist Short Breaks are not within the scope of this process.

Our aim is to gather information from children, young people, parents, carers and other stakeholders about what is currently working and what could be improved, as well as feedback on our proposals for services.

Much of our engagement and consultation will be through our on-line consultation site and we will also be attending short breaks sessions and working with our providers so we can speak with as many children, young people and parent/carers as possible. We will also be running a workshop at Bristol Parent Carers' summer event on the 26th June 2018.

We are looking for your support with the engagement and consultation in the following areas:

- Please distribute our survey link through your networks, especially if you have links to children, parents and carers who do not currently use our services.
- We are keen to speak to children, parents and carers directly either face to face or over the phone, please can you let us know how you could facilitate this by putting us in touch with children, parents and carers with their permission.
- Please could you let us know of any scheduled events or meetings with staff groups or children, parent and carers and children that we could attend as part of this process?
- If you have any other suggestions for the consultation please get in touch.

Please direct any questions or comments on the engagement and consultation to ShortBreaksSurvey2018@bristol.gov.uk

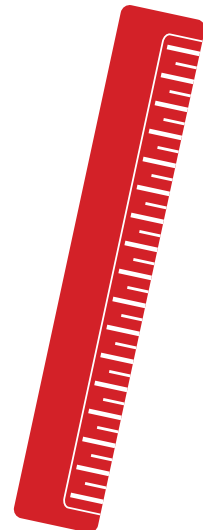
Full details of the engagement and consultation are on the link above.

Becky Bliss

Commissioning Manager SEND

on behalf of the Children's Commissioning Team

becky.bliss@bristol.gov.uk



Schools GDPR Package

On 25th May 2018 new data protection legislation will come into force – GDPR: General Data Protection Regulations. Bristol City Council Legal Services will be providing a GDPR package specifically designed for Schools. Further details of the service offer and cost will be sent to all schools in readiness for your return from the half term break. In preparation for this Legal Services will be offering a free GDPR seminar on 24th April at City Hall.

It is important for SENCOs to consider how information is being stored, communicated and shared.

SENCo Information Sharing

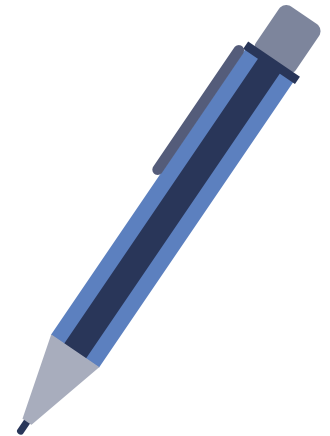
Are you passionate about information? Would you like to be part of shaping the information available for SENCOs in Bristol?

We're looking for 5 SENCOs or Inclusion Managers from across Bristol to take part in 1:1 interviews around what information should be made available for SENCOs. If you're interested in taking part in one of these interviews please contact ruth.fryer@bristol.gov.uk by Thursday 26th April 2018. Interview should take around 15 – 30 minutes.

Nakita Singh

SEND Operational Development and Planning Manager

nakita.singh@bristol.gov.uk



Other Children and Families Newsletters

Children's Emotional Health and Wellbeing

Findability

Hope School/Children in Care

Learning City

Training Journal

SENCo Newsletter

Schools' ICT Newsletter

Governors' Newsletter

Learning Ambassadors

Head Teacher Bulletin - Distributed via email

Bristol Museums - Distributed via email

Sustainable Learning - Distributed via email

East Central Early Help - Distributed via email

North Early Help - Distributed via email

South Early Help - Distributed via email

Early Years Bulletin - Distributed via email

For any feedback on or queries about this newsletter, please contact

TwSonlineadmin@bristol.gov.uk